

# Some Highlights from the Upcoming IM 2015 Auction-- From The Thomas Wyman Collection

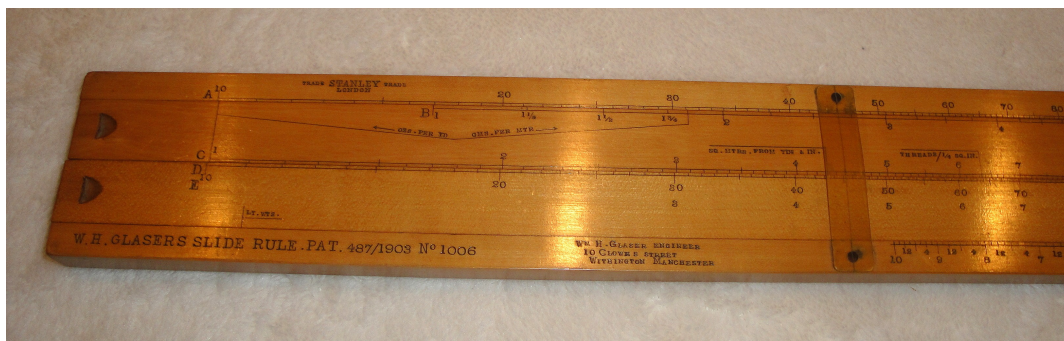
Tom's collecting interests were extremely diverse as is clearly exhibited in his numerous Oughtred Society articles and presentations, OS meeting and other displays. After having set aside a sizeable grouping of different excise rules and related books intended for donation to MIT Museum, we plan to have Tom's diverse collecting interests well-represented at our IM2015 meeting in September, both with items for sale at our IM2015 auction as well as items on display from Tom's vast collection.



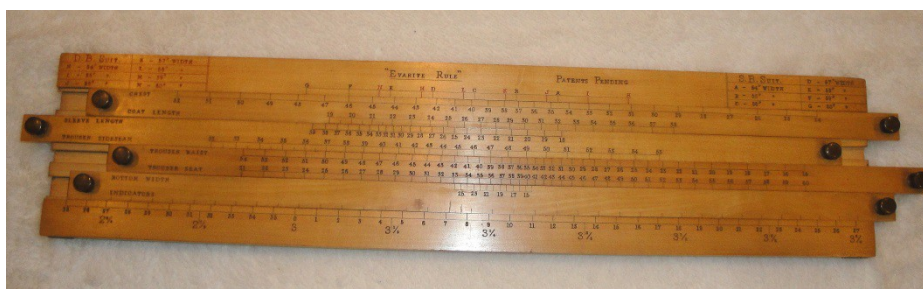
All of the rules being offered at the auction are being carefully scanned or photographed for our Oughtred Society historical database and for the permanent record. Many of these items can be tied directly to an article which appeared in the Oughtred Society Journal and the membership is encouraged to reference those articles for additional history on these pieces and Tom's research and thoughts about them.

**Some highlights that have been earmarked for our IM 2015 auction include many unusual and seldom seen boxwood, ivory rules and other rules and calculators from the 19<sup>th</sup> and early 20<sup>th</sup> century**

- **WH Glasers Slide Rule**

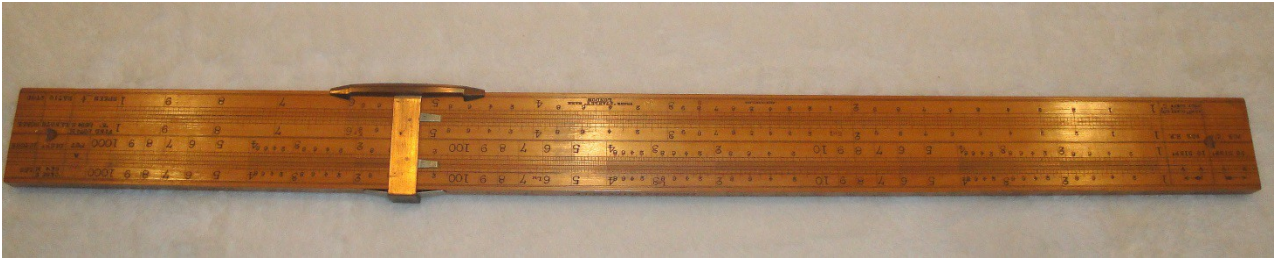


- **Everite Textile Rule**





- **Froude's Slide Rule**

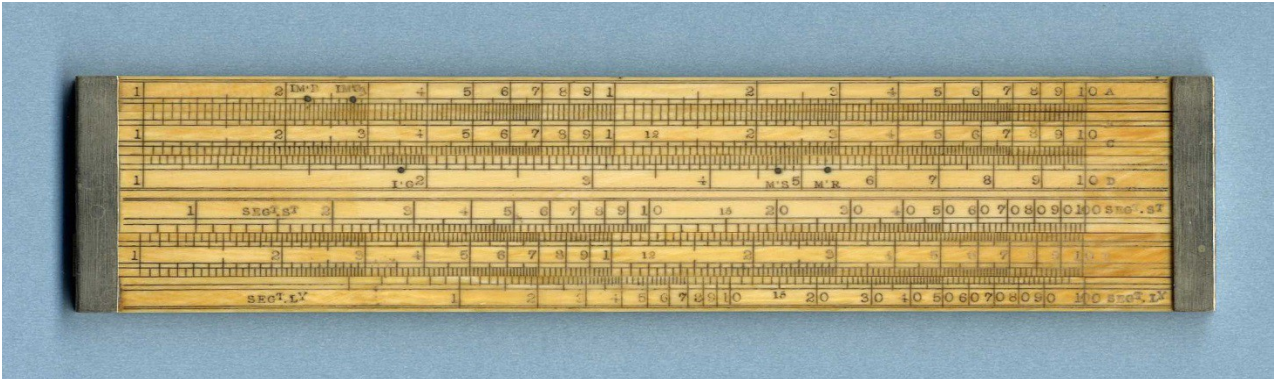
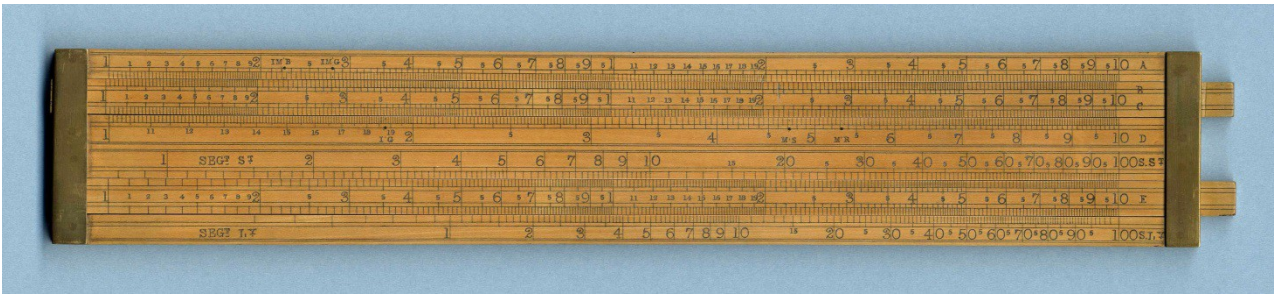


- **Outstanding Example of a Major General Hannington's Boxwood Slide Rule, with both multiplication and square/square roots slides. Hinged box is not original but the modern version is beautifully made and fits nicely**





- **Boxwood and Ivory Two-Side, Two-Slide Rules**



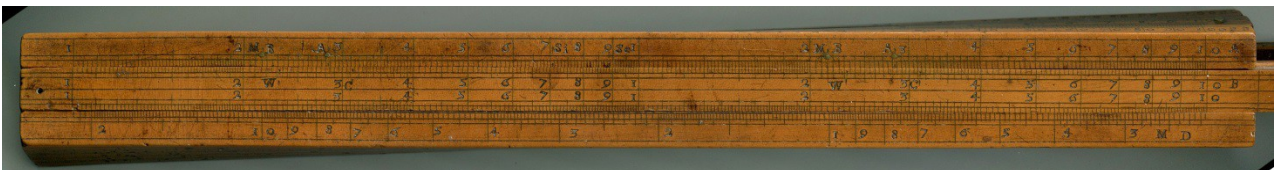
- **Early Boxwood Four Side, Two-Slide Rule, Slides with Square Cross-Section**



- **Early Boxwood Four Side, with Two Slides**



- **Early Boxwood Four Side, with Three Slides**

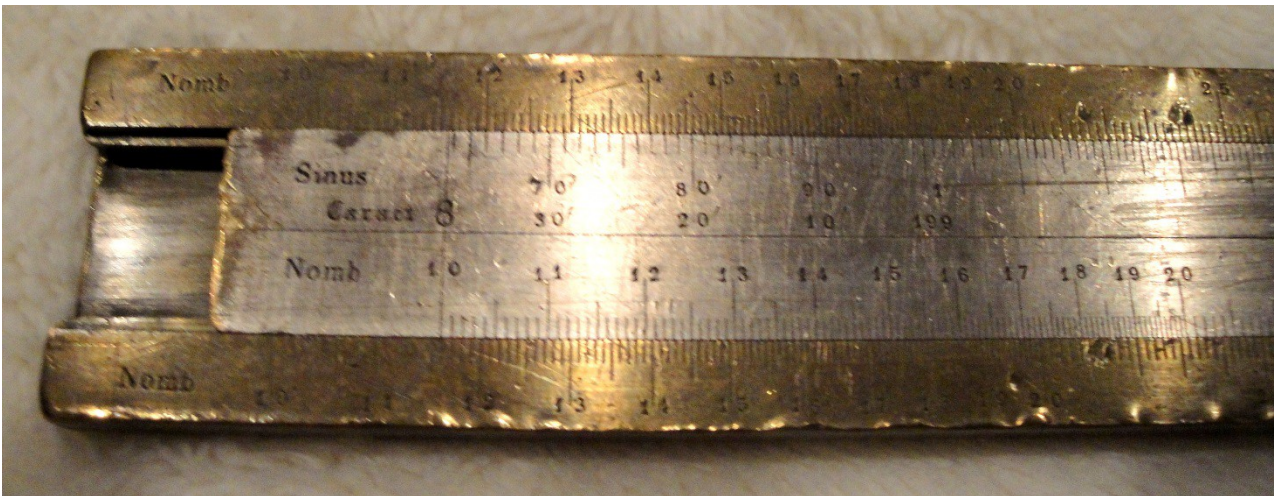




- **Meyrat and Perdrizet Pocket Watch Circular Slide Rule, Serial 119**



- **Metal 20" 19<sup>th</sup> Century Rule by L. Casella**

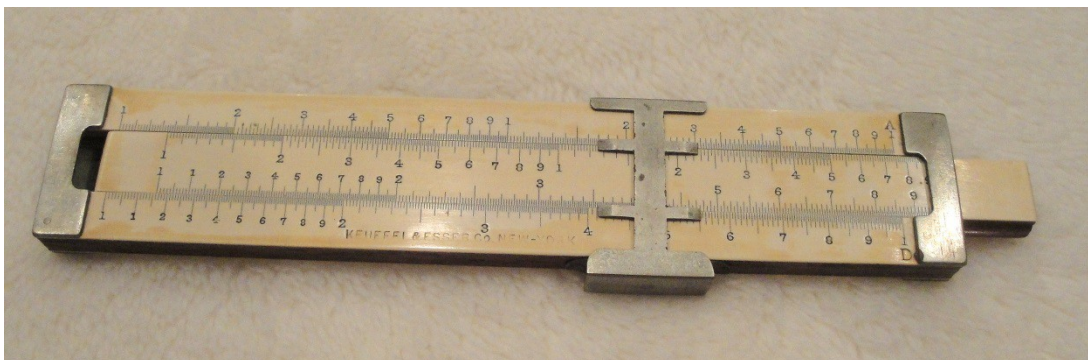




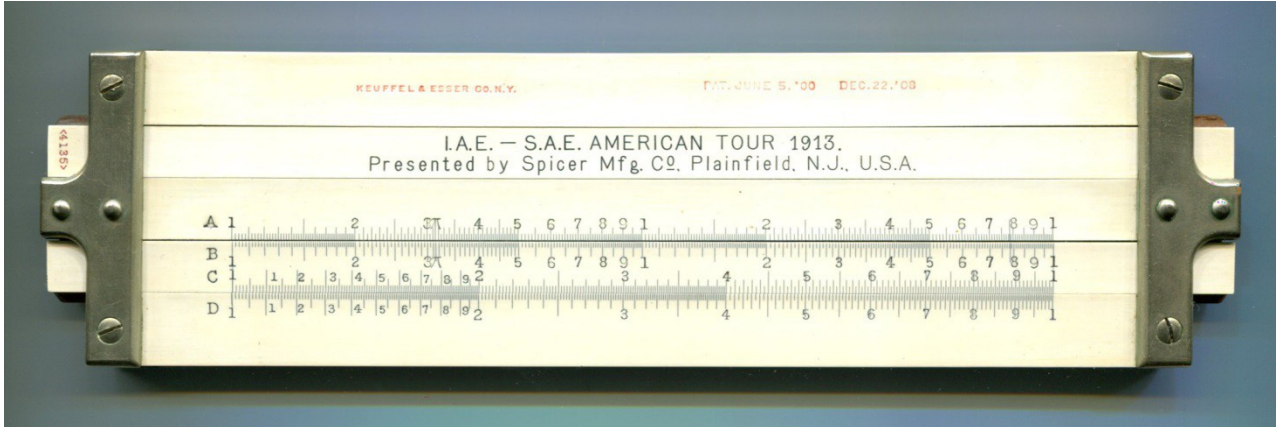
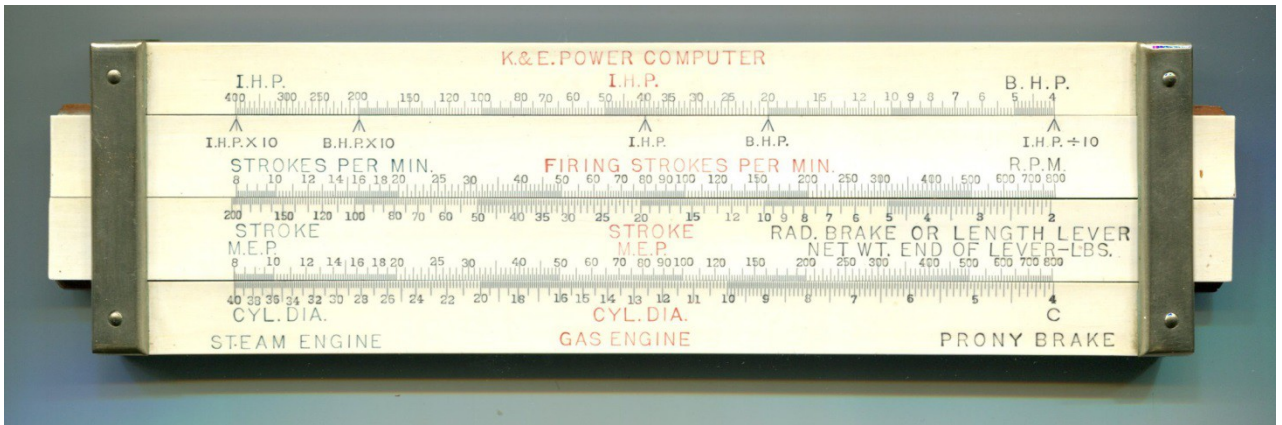
- Early Boxwood Slide Rules by Gravet-Lenoir-Vinay-Tavernier-Gravet



- Early and Unusual Slide Rules by Keuffel and Esser





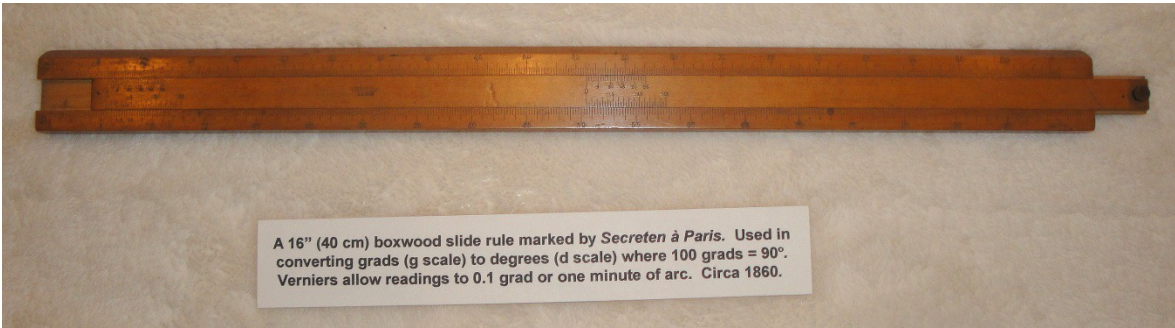
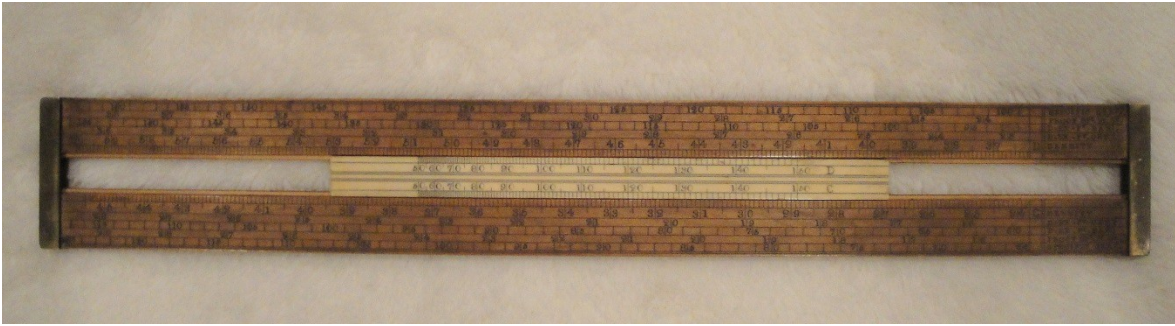


- Keuffel and Esser Thacher Calculator, Serial 5531, in Outstanding, Near New Condition





- Numerous Other Unusual Rules and Instruments of Interest



A 16" (40 cm) boxwood slide rule marked by *Secreten à Paris*. Used in converting grads (g scale) to degrees (d scale) where 100 grads = 90°. Verniers allow readings to 0.1 grad or one minute of arc. Circa 1860.



